

Welcome

- Welcoming new lobby creates primary entranceway and gathering space
- Clearer layout of passageways and flow, with improved & unified signage
- Coherent design/appearance
- Accessibility improvements throughout
- Easier passage between Meeting House and Hardy Hall for fellowship
- Driveway improvements including space for 4 cars to drive up/drop off
- Possibility of additional parking across Monument Square

Worship

- All 4 west-facing windows in Meeting House to be open to adjacent lobby
- New rear entry to sanctuary reducing Narthex bottleneck and promoting easier entry during inclement weather and for bridal parties
- Enlarged Chancel supporting larger choir and alternative worship/music programs
- Accessibility improvements in Meeting House & Chancel
- Upgraded AV capabilities supporting worship program alternatives in Meeting House and use of both Emerson Parlor & Hardy Hall for overflow during worship
- HVAC improvements

Learn

- Improved classroom spaces separated by walls, not dividers
- Main floor nursery located near egress
- CE office adjacent to classrooms
- Youth classroom for post-confirmands, confirmands & pre-confirmands
- AV capabilities in all classrooms & meeting/flexible spaces
- Library Area in New Lobby

Serve

- Outdoor patio with amphitheater seating accessible from street or Hardy Hall, for worship, Christian education, fellowship, or use by community mpovements to Hardy Hall including increased daylight from walk out patio, and storage for tables and chairs.
- No further use of Hardy Hall as classroom space.
- Hardy Hall Kitchen and Deacons' Kitchen renovated
- Improved/additional meeting/flexible spaces for use by church and community groups



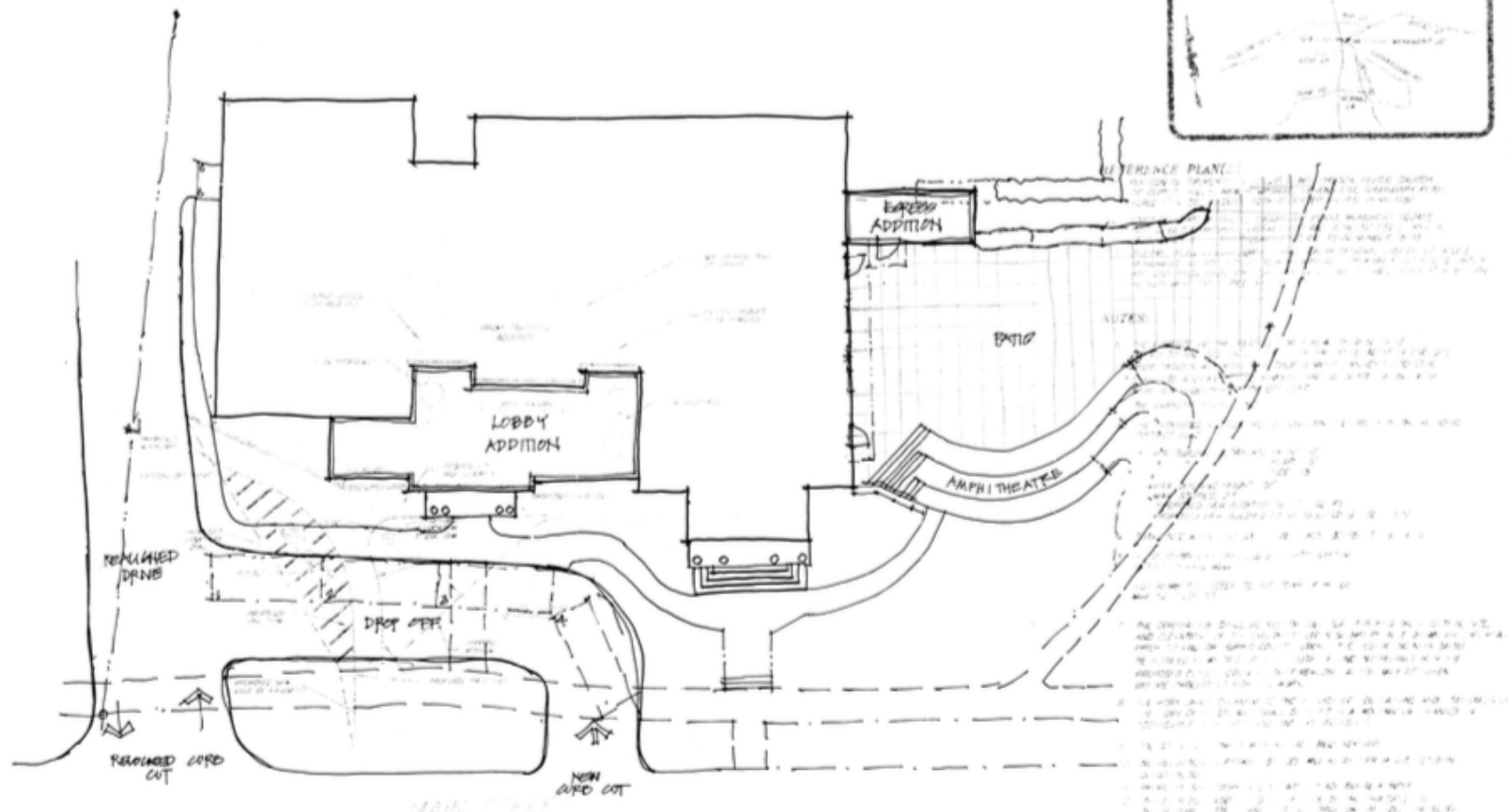
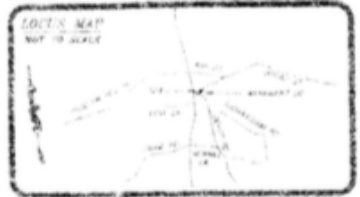
29 May 2018

Draft*

Safety

- Improved egresses and traffic flow throughout
- Multiple Hardy Hall exits at grade level
- Sprinkler system for fire safety in portion of lower level as recommended by fire department
- New secure lobby entrance
- Safe church classrooms

* Note: Features in final project may be modified by town and state reviews, capital campaign proceeds and congregational feedback.



PLANT LIST:
 [] [] TAXUS MEDIA QUARRY SPREADING NEW 2'

1. THE SITE IS A 1.5 ACRE PARCEL WITH A 100' FRONT SETBACK FROM THE STREET. THE EXISTING BUILDING IS A 10,000 SQ FT STRUCTURE WITH A 20' FRONT SETBACK FROM THE STREET. THE PROPOSED ADDITIONS WILL BE PLACED WITHIN THE EXISTING BUILDING FOOTPRINT AND WILL MAINTAIN THE 100' FRONT SETBACK FROM THE STREET.

2. THE PROPOSED ADDITIONS WILL BE PLACED WITHIN THE EXISTING BUILDING FOOTPRINT AND WILL MAINTAIN THE 100' FRONT SETBACK FROM THE STREET.

3. THE PROPOSED ADDITIONS WILL BE PLACED WITHIN THE EXISTING BUILDING FOOTPRINT AND WILL MAINTAIN THE 100' FRONT SETBACK FROM THE STREET.

4. THE PROPOSED ADDITIONS WILL BE PLACED WITHIN THE EXISTING BUILDING FOOTPRINT AND WILL MAINTAIN THE 100' FRONT SETBACK FROM THE STREET.

5. THE PROPOSED ADDITIONS WILL BE PLACED WITHIN THE EXISTING BUILDING FOOTPRINT AND WILL MAINTAIN THE 100' FRONT SETBACK FROM THE STREET.

6. THE PROPOSED ADDITIONS WILL BE PLACED WITHIN THE EXISTING BUILDING FOOTPRINT AND WILL MAINTAIN THE 100' FRONT SETBACK FROM THE STREET.

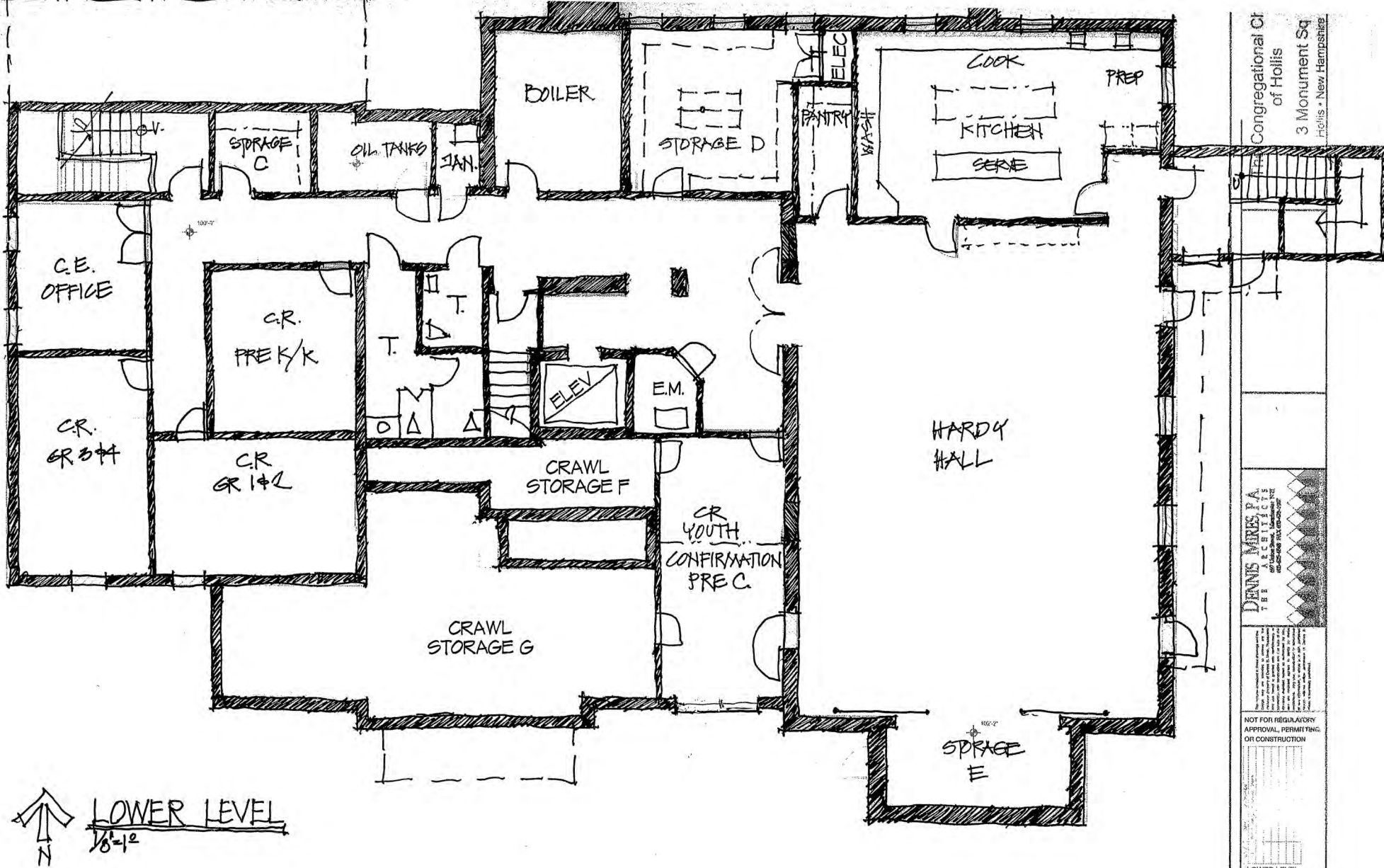
7. THE PROPOSED ADDITIONS WILL BE PLACED WITHIN THE EXISTING BUILDING FOOTPRINT AND WILL MAINTAIN THE 100' FRONT SETBACK FROM THE STREET.

8. THE PROPOSED ADDITIONS WILL BE PLACED WITHIN THE EXISTING BUILDING FOOTPRINT AND WILL MAINTAIN THE 100' FRONT SETBACK FROM THE STREET.

9. THE PROPOSED ADDITIONS WILL BE PLACED WITHIN THE EXISTING BUILDING FOOTPRINT AND WILL MAINTAIN THE 100' FRONT SETBACK FROM THE STREET.

10. THE PROPOSED ADDITIONS WILL BE PLACED WITHIN THE EXISTING BUILDING FOOTPRINT AND WILL MAINTAIN THE 100' FRONT SETBACK FROM THE STREET.

↑ N
 SITE CONCEPT
 DW
 DENNIS MEERS, P.A.
 THE ARCHITECTS
 5/17/18

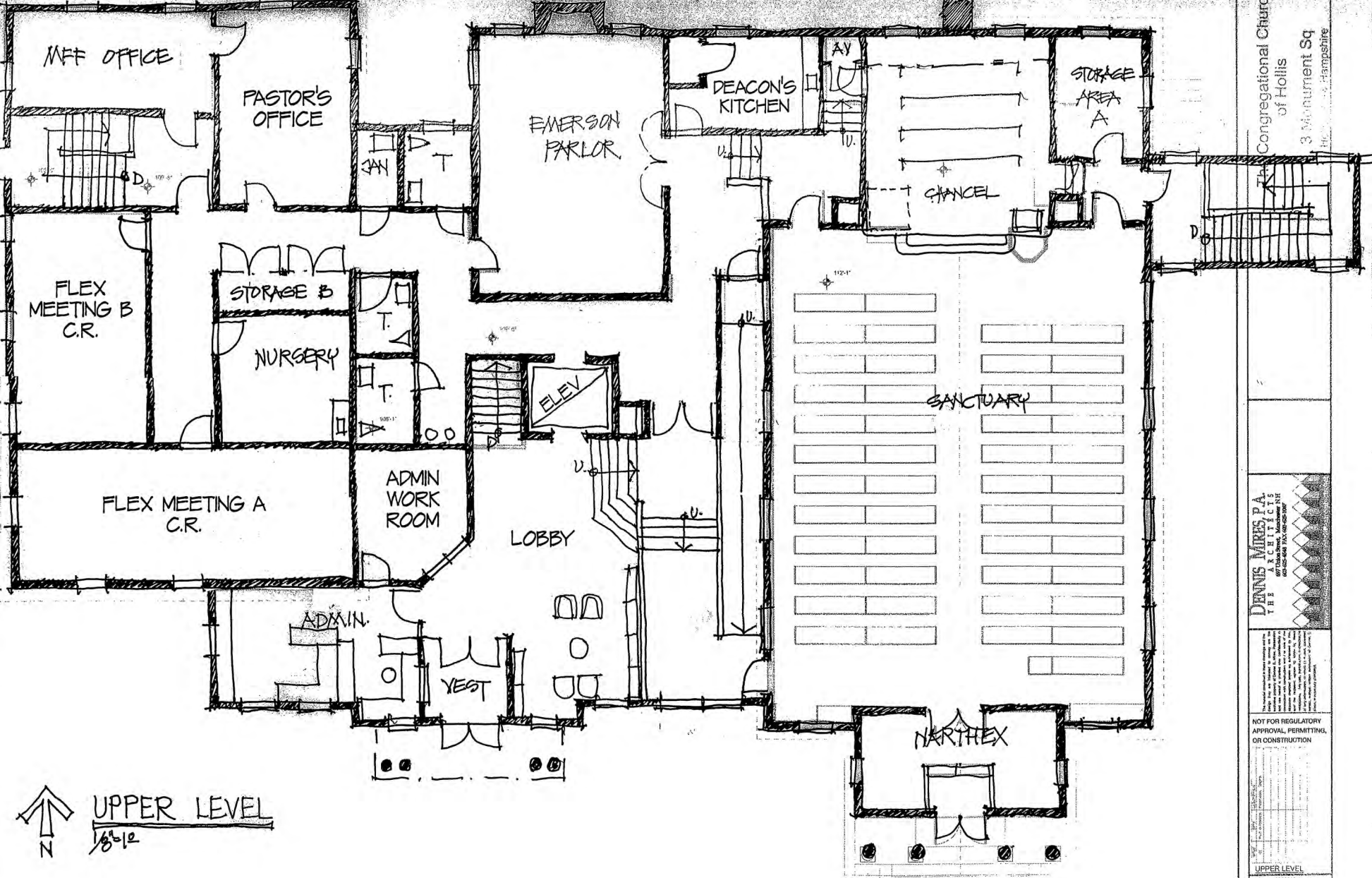


Congregational Ch
of Hollis
3 Monument Sq
Hollis - New Hampshire

DENNIS MORIS P.A.
THE SCHEMATIC
ARCHITECTS
100-1000
100-1000

NOT FOR REGULAR USE
APPROVAL, PERMITTING,
OR CONSTRUCTION

LOWER LEVEL
proj. no.: 2018013



Congregational Church
 of Hollis
 3 Mount Sq
 Hollis, Hampshire

DENNIS MURIS P.A.
 ARCHITECTS
 67 The Green, Andover, NH
 603-852-7000

NOT FOR REGULATORY
 APPROVAL, PERMITTING,
 OR CONSTRUCTION

↑
 N
 UPPER LEVEL
 1/8/12

UPPER LEVEL
 Proj. No.: 2010-113



