

Welcome

- Welcoming new lobby creates primary entranceway and gathering space
- Clearer layout of passageways and flow, with improved & unified signage
- Coherent design/appearance
- Accessibility improvements throughout
- Easier passage between Meeting House and Hardy Hall for fellowship
- Driveway improvements including space for 4 cars to drive up/drop off
- Possibility of additional parking across Monument Square

Worship

- All 4 west-facing windows in Meeting House to be open to adjacent lobby
- New rear entry to sanctuary reducing Narthex bottleneck and promoting easier entry during inclement weather and for bridal parties
- Enlarged Chancel supporting larger choir and alternative worship/music programs
- Accessibility improvements in Meeting House & Chancel
- Upgraded AV capabilities supporting worship program alternatives in Meeting House and use of both Emerson Parlor & Hardy Hall for overflow during worship
- HVAC improvements

Learn

- Improved classroom spaces separated by walls, not dividers
- Main floor nursery located near egress
- CE office adjacent to classrooms
- Youth classroom for post-confirmands, confirmands & pre-confirmands
- AV capabilities in all classrooms & meeting/flexible spaces
- Library Area in New Lobby

Serve

- Outdoor patio with amphitheater seating accessible from street or Hardy Hall, for worship, Christian education, fellowship, or use by community
- Improvements to Hardy Hall including increased daylight from walk out patio, and storage for tables and chairs.
- No further use of Hardy Hall as classroom space.
- Hardy Hall Kitchen and Deacons' Kitchen renovated
- Improved/additional meeting/flexible spaces for use by church and community groups



September 23, 2018

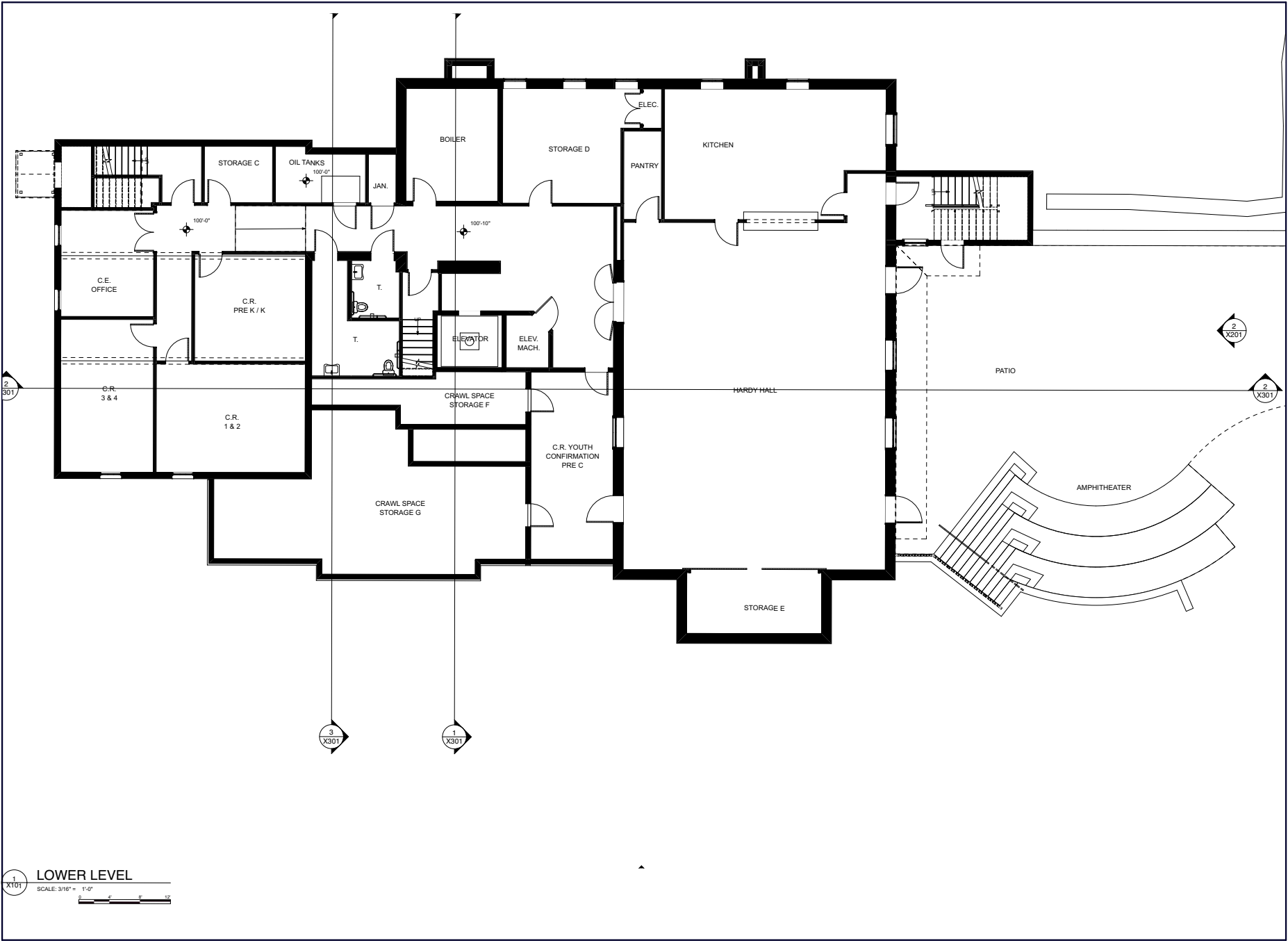
Preliminary

Safety

- Improved egresses and traffic flow throughout
- Multiple Hardy Hall exits at grade level
- Sprinkler system for fire safety in portion of lower level as recommended by fire department
- New secure lobby entrance
- Safe church classrooms

* Note: Features in final project may be modified by town and state reviews, capital campaign proceeds and congregational feedback.

S:\arch\401\Projects\1816\The Congregational Church - 301 Monument Sq\301 Monument Sq\1816\1111.dwg, September 27, 2018



1
X101
LOWER LEVEL
SCALE: 3/16" = 1'-0"
0 3 6 9 12 15

The Congregational Church
of Hollis
3 Monument Sq
Hollis • New Hampshire

DENNIS MILES P.A.
THE ARCHITECTS
697 Main Street, Manchester, NH
603-852-7600 FAX 603-852-7601
www.themilesarchitects.com

These drawings were prepared by the Architect for the Client. They are not to be used for any other purpose without the written consent of the Architect. The Client is responsible for obtaining all necessary permits and approvals. The Architect is not responsible for any errors or omissions in these drawings.

NOT FOR REGULATORY
APPROVAL, PERMITTING,
OR CONSTRUCTION

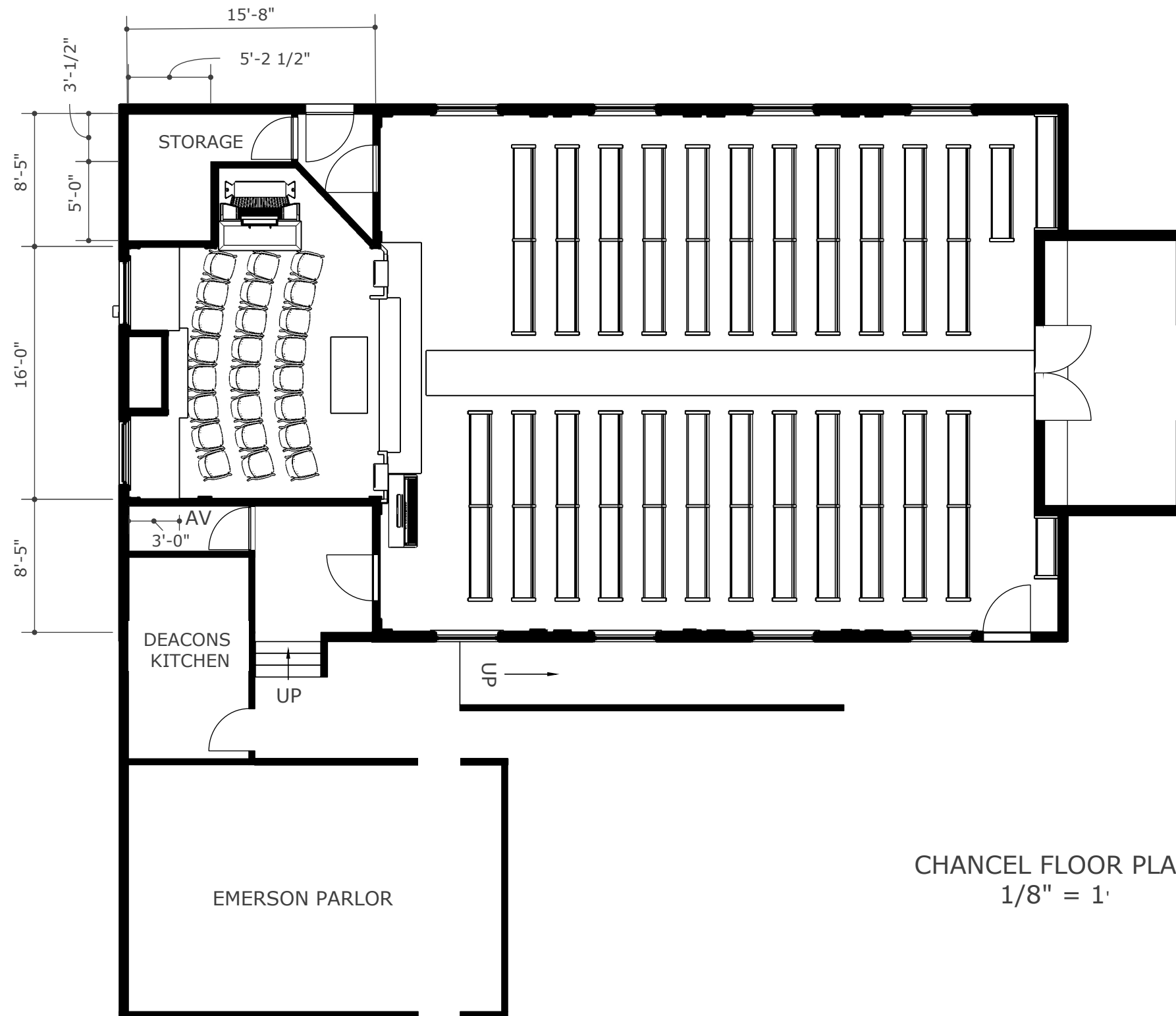
NO.	DATE	DESCRIPTION

LOWER LEVEL

proj. no.: 2018013

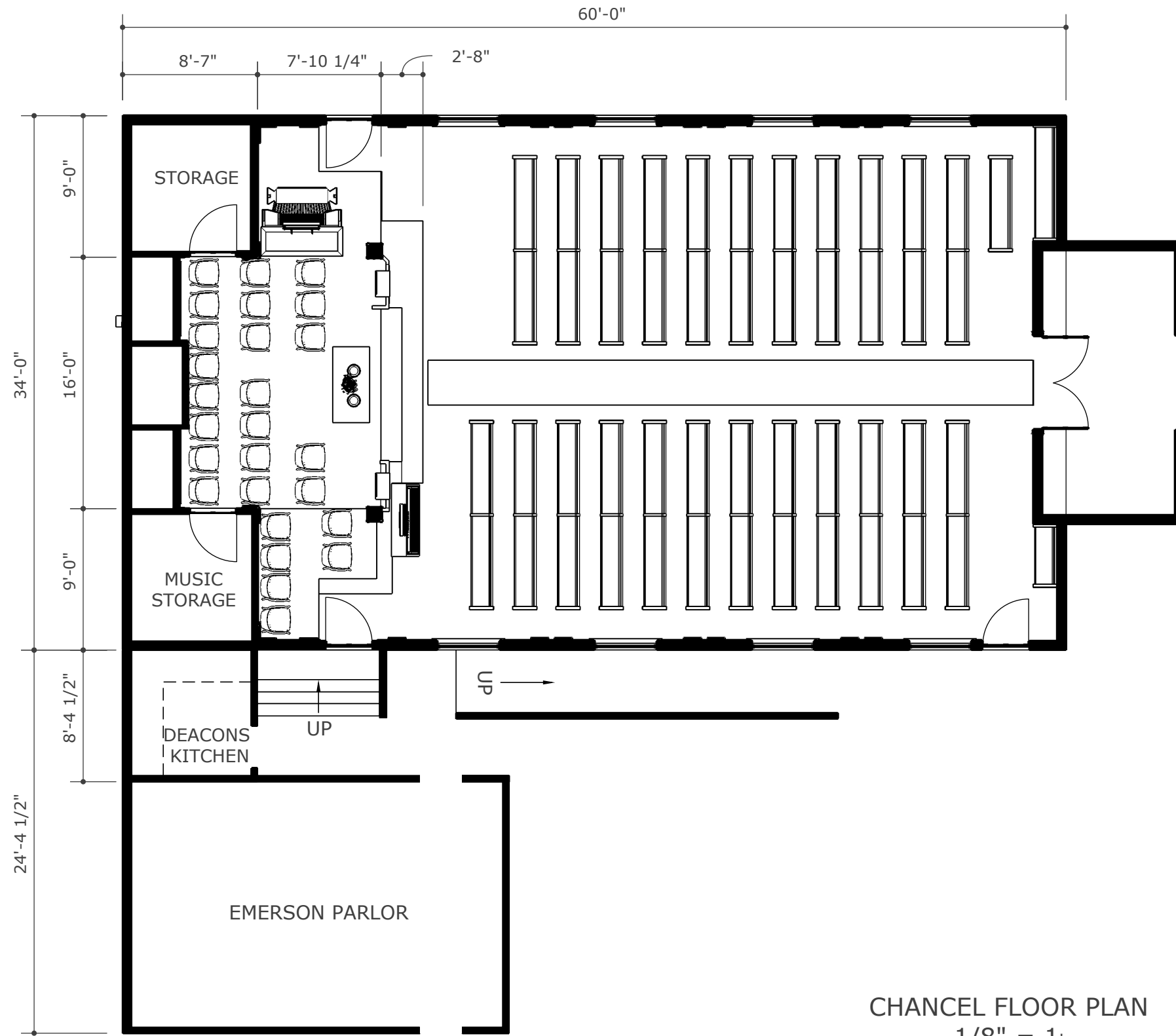
X101





CHANCEL FLOOR PLAN
1/8" = 1'





CHANCEL FLOOR PLAN
 1/8" = 1'

C.G.

