

Building

OUR

Vision

Congregational Church of Hollis



Street Views



SOUTH Elevation
SCALE: 1/4" = 1'-0"

EAST Elevation
SCALE: 1/4" = 1'-0"

The Congregational Church of Hollis
3 Monument Sq
Hollis • New Hampshire

DENNIS MILES, P.A.
ARCHITECTURE
1000 W. Rte. 102
Hollis, NH 03043
TEL: 603.883.1111
WWW.DENNISMILES.COM

NOT FOR REGULATORY APPROVAL, PERMITTING, OR CONSTRUCTION

NO.	DATE	DESCRIPTION

X201

Cross Sections



The image contains three architectural cross-sections of a church building. The top-left section is labeled "A2-4 J1 Section" with a scale of 1/4" = 1'-0". The top-right section is labeled "A2-3 D7 Section" with a scale of 1/4" = 1'-0". The bottom-left section is labeled "A2-3 J1 Section" with a scale of 1/4" = 1'-0". Each section shows the internal structure, including walls, floors, and rooflines. A north arrow is present in the top-left section. To the right of the sections is a vertical title block containing the project name, architect information, and a disclaimer.

The Congregational Church
of Hollis
3 Monument Sq
Hollis - New Hampshire

DENNIS MILES P.A.
1111
1111
1111

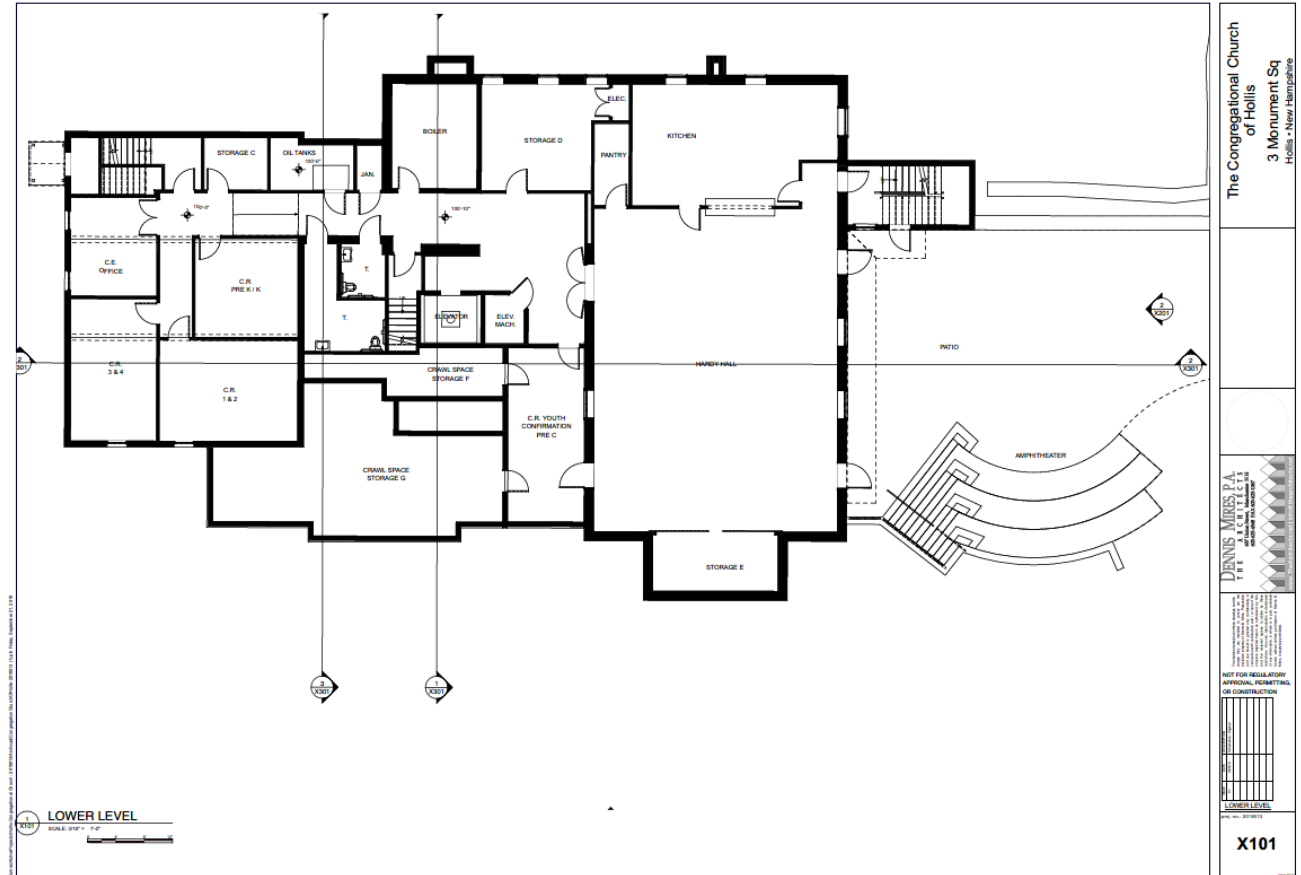
NOT FOR REGULATORY
APPROVAL, PERMITS, ETC.,
OR CONSTRUCTION

SECTION

DATE: 08/2011

X301

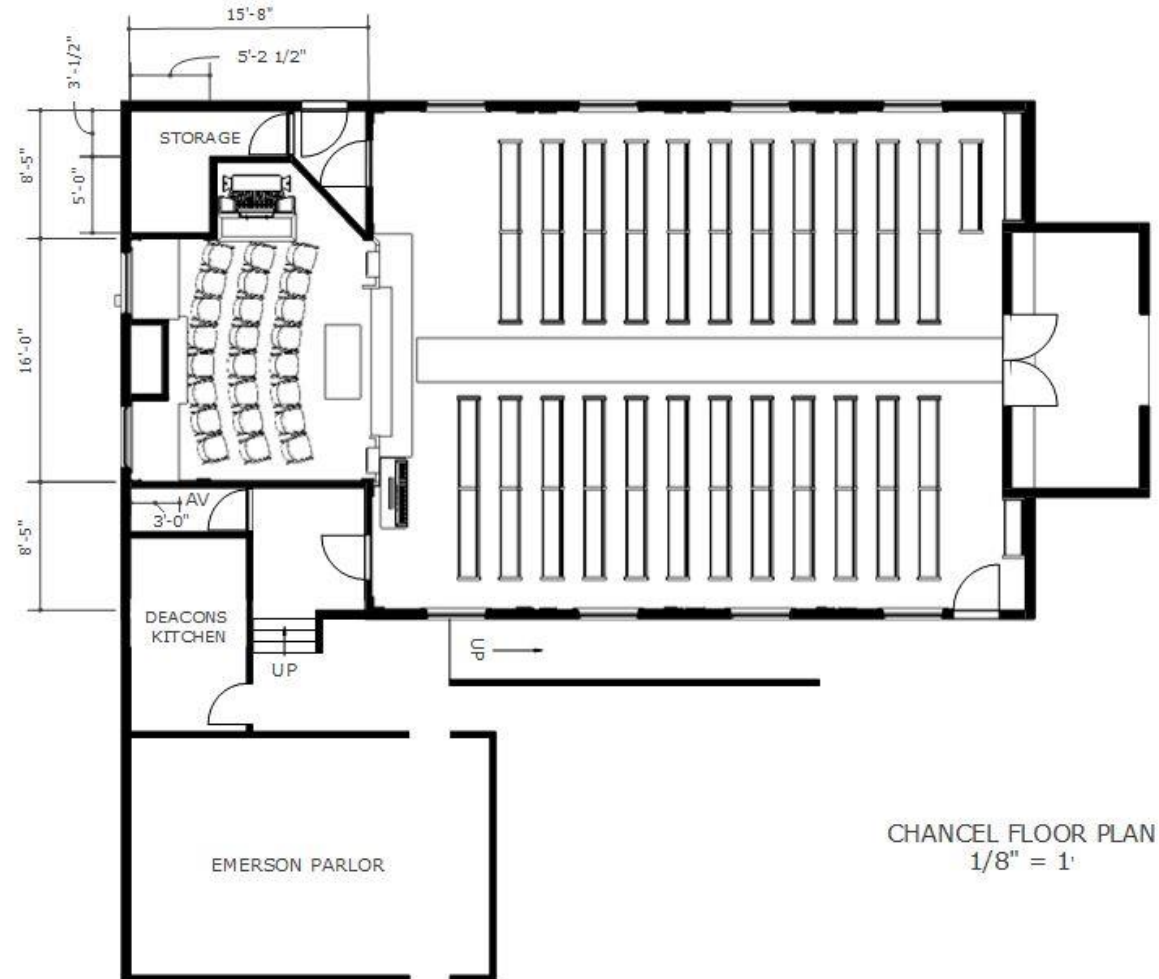
Lower Level



Chancel A



Chancel A Floor Plan

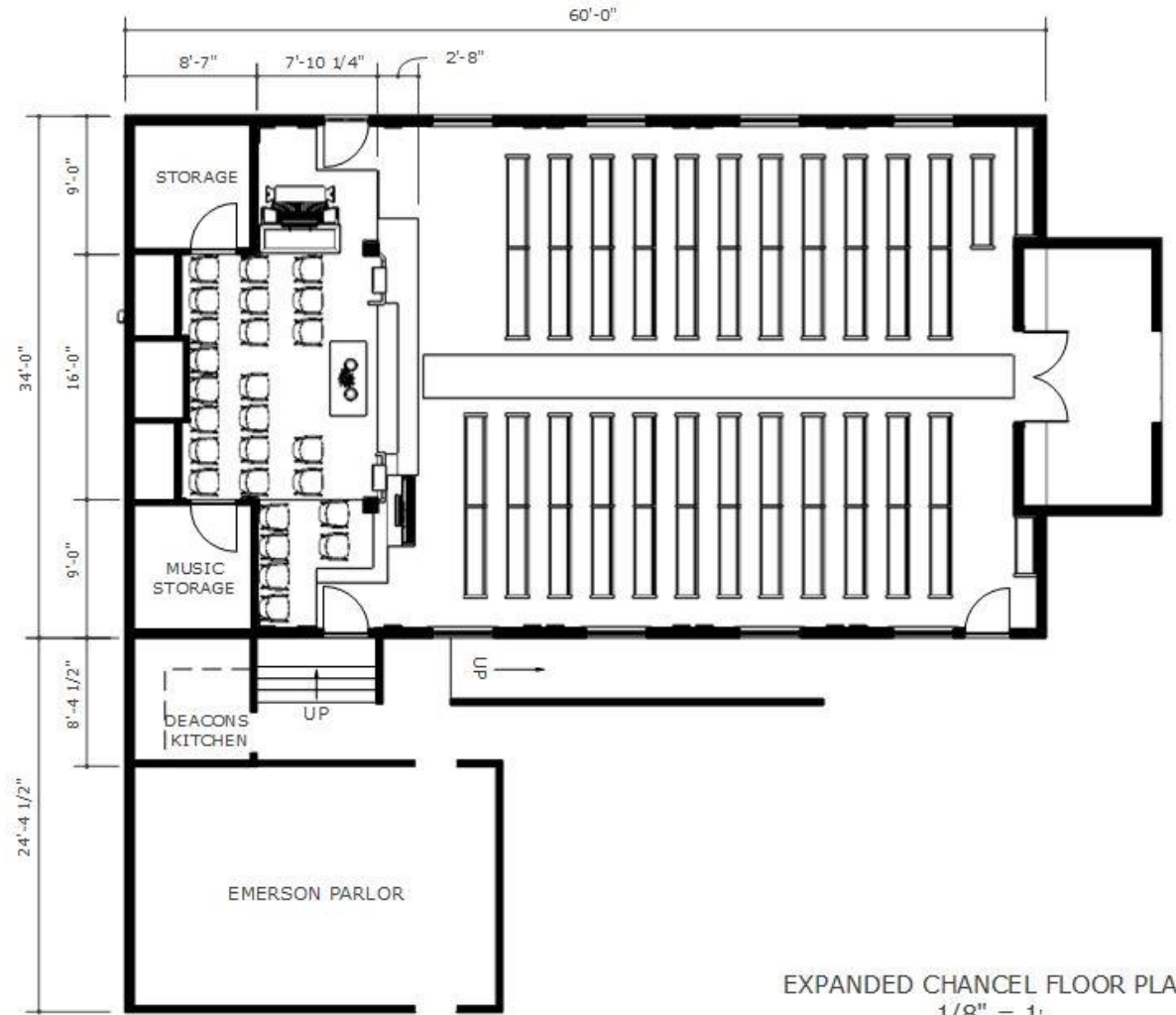


CHANCEL FLOOR PLAN
1/8" = 1'

Chancel B



Chancel B Floor Plan



EXPANDED CHANCEL FLOOR PLAN
1/8" = 1'

Chancel B – Screens Down



People Are Talking



- “The building looks tired. It feels so dingy – not a welcoming look.”
- “The traffic flow is terrible.”
- “It's absolutely necessary.”
- “We really need to come together to make a difference in this community, not just limp along.”
- “If we fix up the building, we will be able to offer more programs for more people.”
- “The [proposed renovations] will add to the professionalism of the Church, will make our facilities more contemporary, and functional.”
- “Every project is going to enable the Church to serve more people and do more missions.”
- “This is going to benefit more than just ourselves.”
- “It's time – it's long overdue.”

Rules of Thumb



- 4-5 times a Church's annual budget.
- 15-30% leadership gifts of at least \$30,000.
- one or more gifts of at least 10% of the goal.
- 80% from donors contributing \$30,000 or more.
- 4-5 times the amount of their annual pledge.
- 45% in Year 1, 30% in Year 2, and 25% in Year 3.

Rules of Thumb Applied to Us



- 2018 annual budget is \$355,000
- campaign goal range of \$1,065,000 - \$1,775,000.
- \$2Million target is on the high side of the range.
- raise \$1,600,000 (80%) from folks contributing at least \$30,000.
- In 2018, the average amount of the 140 pledges made to our Church is \$2,000 (suggesting average contributions to the capital campaign of \$8-10,000.)

Where Do We Stand So Far?



- tentative commitments for roughly \$750,000
- average of \$50,000 across 15 donors
- two indications of six-figure commitments
- including one that approaches 10% of the project cost; and
- the capital campaign has not even yet begun!

How Do We Get From Here to There?



- expand number of prospective lead donors from 14 to closer to 42 – (30% of our 140 pledgers) - or more!
- initial group may increase levels of support
- one couple raised pledge from \$45,000 to \$75,000.
- largest-ever charitable commitment
- contributions payable over five tax years: 2018, 2019, 2020, 2021, and 2022.
- a \$10,000 contribution could be paid in five annual installments of \$2,000 per year.
- not everyone will be able to contribute at the average level, so we will need many pledgers to exceed the average.

How Do We Make Sure We Don't Bite Off More Than We Can Chew?



- October 21:
 - contractual plans; and
 - capital campaign.
- Assess campaign results in the spring:
 - fall short - discuss options;
 - meet goal – vote to proceed;
 - exceed goal – vote to proceed and allocate surplus funds.
- Don't break ground until ½ in hand.
- Exploring options for financing the second half, but nothing long term - only until the pledges are paid in during the pay-in period (2018 – 2022).

How Do We Feel
About It?



We Have Changed
Before



God is Love



We are one in the Spirit, we are one in the Lord
We are one in the Spirit, we are one in the Lord
And we pray that our unity will one day be restored
And they'll know we are Christians by our love, by our
love
Yes, they'll know we are Christians by our love.

We will work with each other, we will work side by side
We will work with each other, we will work side by side
And we'll guard each one's dignity and save each one's
pride
And they'll know we are Christians by our love, by our
love
Yes, they'll know we are Christians by our love.

Building

OUR

Vision

Congregational Church of Hollis

