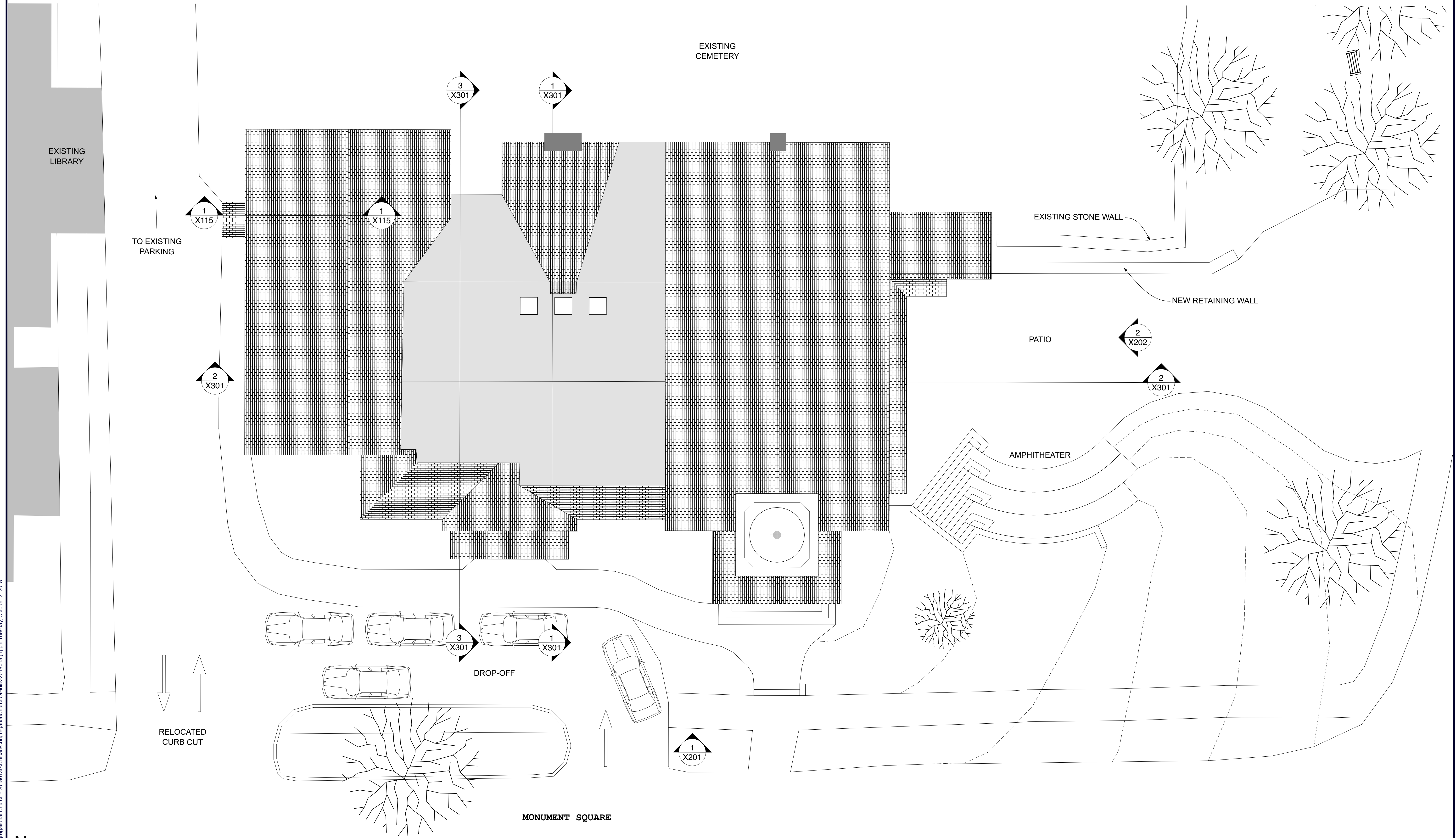


Volume:ActiveProjects>Hollis-CongregationalChurch-20180131\Architect\CongregationalChurch>Hollis-20180131 (1).jpg, Tuesday, October 2, 2018



SITE PLAN
 SCALE: 1/8" = 1'-0"
 0 4 8 16

The Congregational Church
 of Hollis
 3 Monument Sq
 Hollis • New Hampshire

DENNIS MILES, P.A.
 THE ARCHITECTS
 697 Union Street, Manchester, NH
 603-625-4546 FAX 603-625-1067
 www.TheArchitects.net info@thearchitects.net

The material contained in these drawings and the design they are intended to convey are the property of Dennis Miles, P.A. and shall not be used for any other project without the written consent of Dennis Miles, P.A. and used for any other project without the written consent of Dennis Miles, P.A. and used for any other project without the written consent of Dennis Miles, P.A. Any use, reproduction or distribution of these drawings without the written permission of Dennis Miles, P.A. is expressly prohibited.

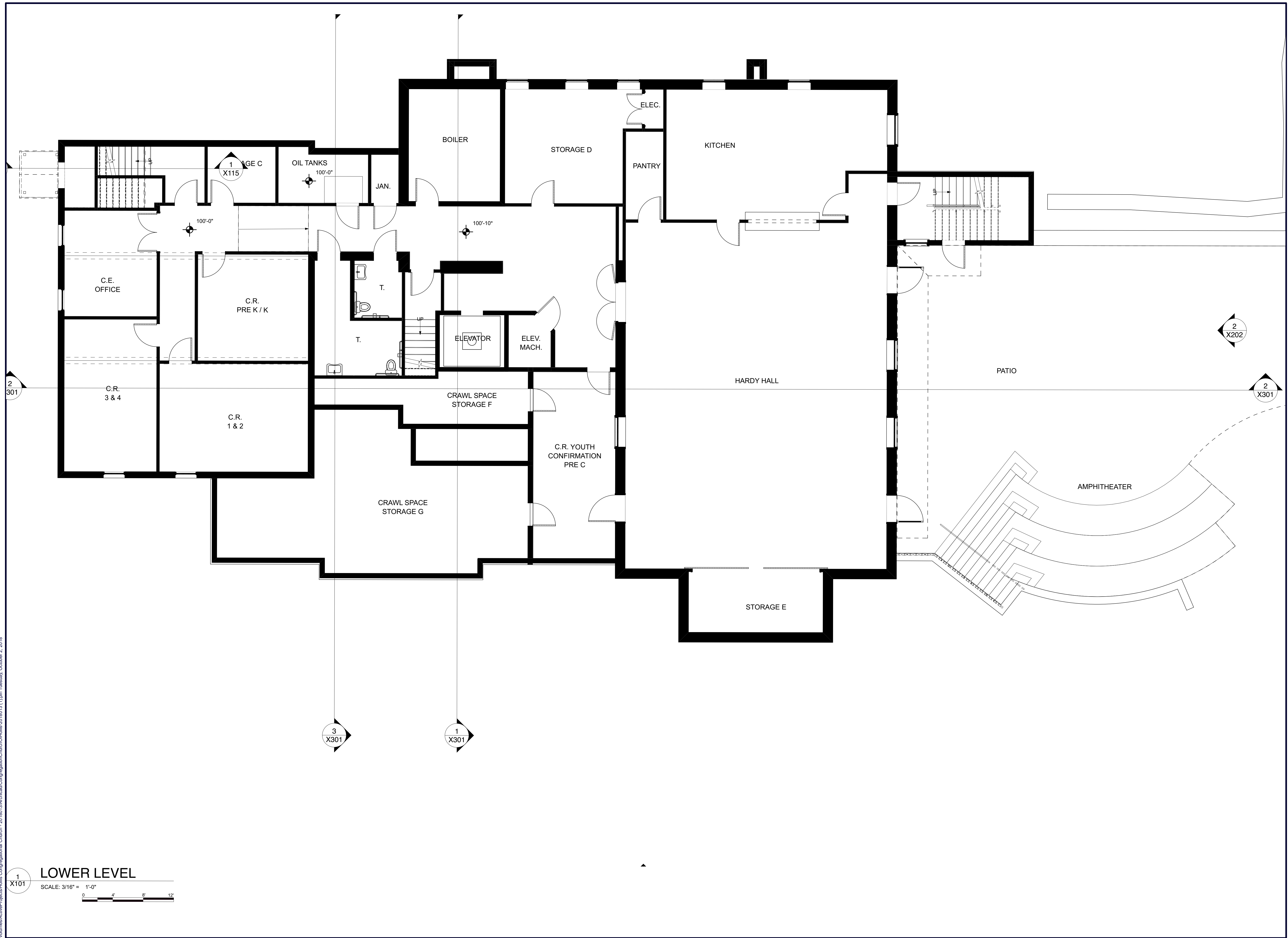
NOT FOR REGULATORY APPROVAL, PERMITTING, OR CONSTRUCTION

ISSUE	DATE	DESCRIPTION
01	10/02/18	Site Plan - Original

SITE
 proj. no.: 2018013

X100

Volume/ActiveProjects/Hollis - 2018013/Architect/CongregationalChurch/Hollis-2018013 (1).pdf, Tuesday, October 2, 2018



The Congregational Church
of Hollis
3 Monument Sq
Hollis • New Hampshire

DENNIS MIRIS, P.A.
THE ARCHITECTS
697 Union Street, Manchester, NH
603-625-4546 FAX 603-625-1067
www.TheArchitects.net | info@thearchitects.net

The material contained in these drawings and the design they are intended to convey are the property of Dennis Miris, P.A. and shall remain confidential and not be used for any other project without the written consent of Dennis Miris, P.A. Any use, reproduction or distribution of these drawings without the written permission of Dennis Miris, P.A. is expressly prohibited.

NOT FOR REGULATORY APPROVAL, PERMITTING, OR CONSTRUCTION

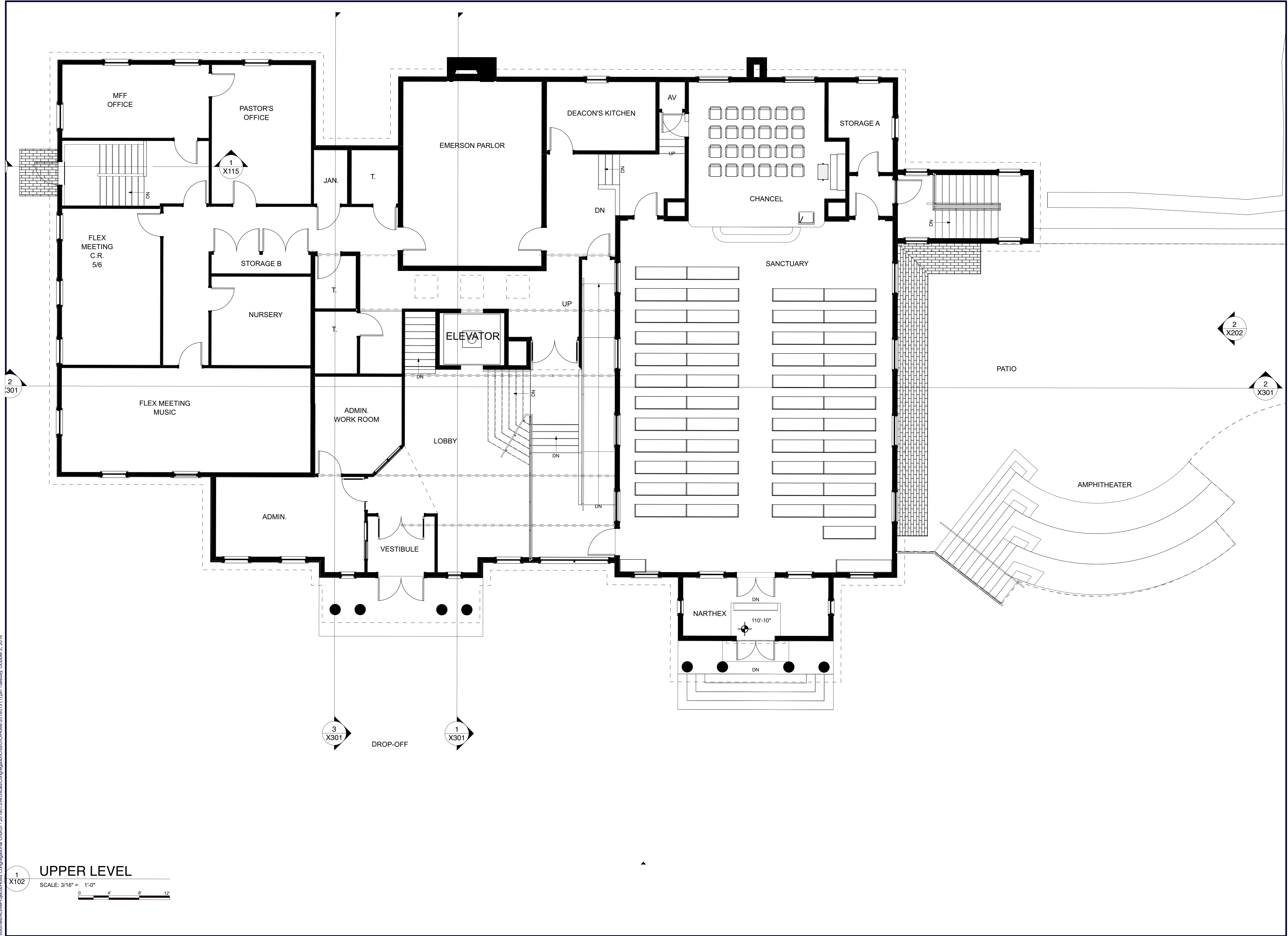
ISSUE	DATE	DESCRIPTION
01	10/02/18	Schematics - CD
02	10/02/18	Schematics - Original

LOWER LEVEL

proj. no.: 2018013

X101

Volume/ActiveProjects/Hollis - 2018013/Architect/CongregationalChurch/Hollis-2018013 (1).pdf, Tuesday, October 2, 2018



1 X102
UPPER LEVEL
 SCALE: 3/16" = 1'-0"
 0 4 8 12

The Congregational Church
 of Hollis
 3 Monument Sq
 Hollis • New Hampshire

DENNIS MIRIS, P.A.
 THE ARCHITECTS
 697 Union Street, Manchester, NH
 603-625-4548 FAX 603-625-1067
 www.TheArchitects.net info@thearchitects.net

The material contained in these drawings and the design they are intended to convey are the property of the Architect and are to be used only in connection with the project and for the use intended. No part of these drawings may be reproduced, stored in a retrieval system, or transmitted in any form or by any means, without written permission of Dennis Miris, P.A.

NOT FOR REGULATORY APPROVAL, PERMITTING, OR CONSTRUCTION

ISSUE	DATE	DESCRIPTION
01	10/02/18	Schematics - CD
02	10/02/18	Schematics - Original

UPPER LEVEL
 proj. no.: 2018013

X102

Volume:Active\Projects\Hollis - 2018013\Architect\CongregationalChurch\Hollis-2018013 (1).jpg, Tuesday, October 2, 2018



1 SOUTH Elevation
X201
SCALE: 3/16" = 1'-0"
0 4' 8' 12'

The Congregational Church
of Hollis
3 Monument Sq
Hollis • New Hampshire

DENNIS MILES, P.A.
THE ARCHITECTS
697 Union Street, Manchester, NH
603-625-4546 FAX 603-625-1067

The material contained in these drawings and the design they are intended to convey are the property of Dennis Miles, P.A. and shall not be used, copied, or reproduced in any form without the written consent of Dennis Miles, P.A. Any use, reproduction or distribution of these drawings without the written permission of Dennis Miles, P.A. is expressly prohibited.

NOT FOR REGULATORY APPROVAL, PERMITTING, OR CONSTRUCTION

DATE	DESCRIPTION
10/02/18	Schematics - GC
10/02/18	Schematics - Original

ELEVATIONS

proj. no.: 2018013

X201



2
X202 EAST Elevation
SCALE: 3/16" = 1'-0"
0 4' 8' 12'

The Congregational Church
of Hollis
3 Monument Sq
Hollis • New Hampshire

DENNIS MIREX, P.A.
THE ARCHITECTS
697 Union Street, Manchester, NH
603-625-4548 FAX 603-625-1067
www.TheArchitects.net info@thearchitects.net

The material contained in these drawings and the design they are intended to convey are the property of Dennis Mirex, P.A. and are to be used only in connection with the project and for the use intended. No part of these drawings may be reproduced, stored in a retrieval system, or transmitted in any form or by any means, without written permission of Dennis Mirex, P.A.

NOT FOR REGULATORY APPROVAL, PERMITTING, OR CONSTRUCTION

DATE	DESCRIPTION
10/2/18	Revisions - GC

ELEVATIONS

proj. no.: 2018013

X202