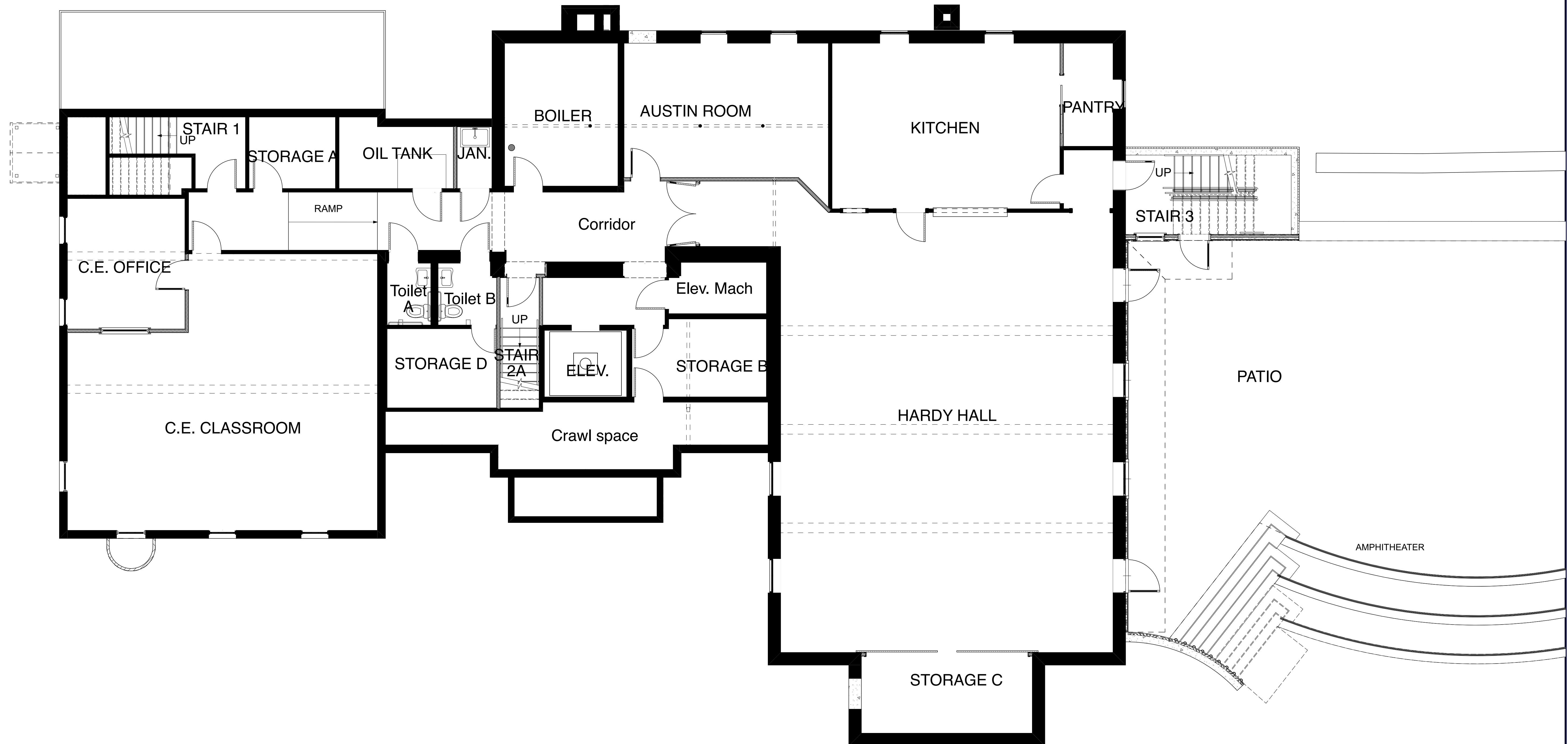


en:\administrator\Desktop\Caroline\FOR Remodel\Work\Hollis Church\20200217 CORE - CongregationalChurch\Hollis-2018013_V23.dwg Wednesday, February 19, 2020

PROPOSED LOWER LEVEL

SCALE: 3/16" = 1'-0"



The Congregational Church
of Hollis
3 Monument Sq
Hollis • New Hampshire

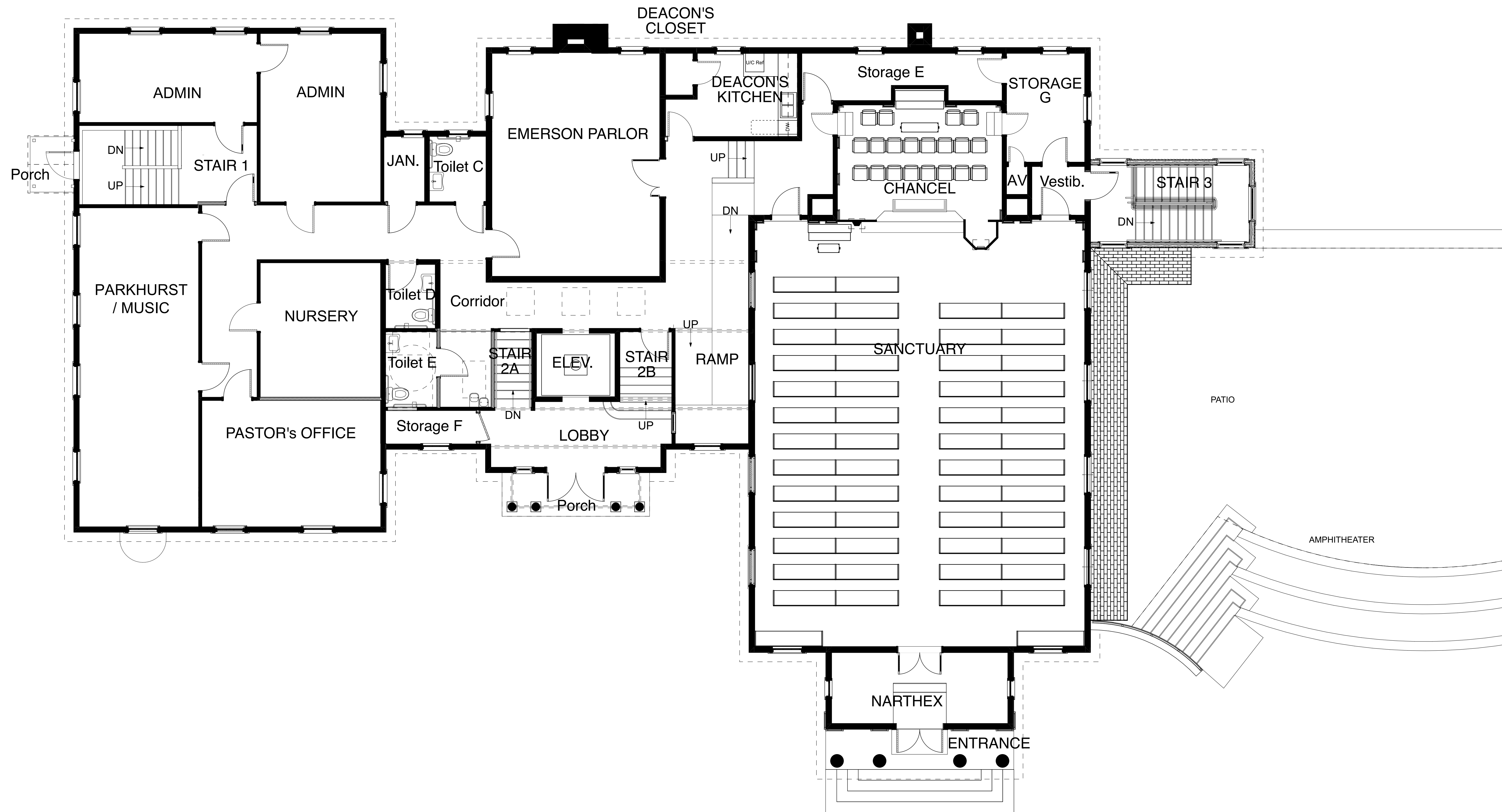
DENNIS MILES, P.A.
THE ARCHITECTS
697 Union Street, Manchester, NH
603-625-4548 FAX 603-625-1067
www.TheArchitects.net | info@thearchitects.net

The material contained in these drawings and the design they are intended to convey are the property of Dennis Miles, P.A. and shall remain confidential and use thereof is granted only conditionally in connection with construction and / or sale of this project. Any use, reproduction or distribution of these drawings or design without the written permission of Dennis Miles, P.A. is expressly prohibited.

Date: 2/19/20

Proposed Lower Level - CORE OPTION

proj. no.: 2018013



PROPOSED UPPER LEVEL

SCALE: 3/16" = 1'-0"

The Congregational Church
of Hollis
3 Monument Sq
Hollis • New Hampshire

DENNIS MILES, P.A.
THE ARCHITECTS
697 Union Street, Manchester, NH
603-625-4548 FAX 603-625-1067
www.TheArchitects.net | info@thearchitects.net

The material contained in these drawings and the design they are intended to convey are the property of Dennis Miles, P.A. and shall not be used for any other project without the written consent of Dennis Miles, P.A. in connection with construction and / or sale of this project. Any use, reproduction or distribution of these drawings without the written permission of Dennis Miles, P.A. is expressly prohibited.

Date: 2/19/20

Proposed Upper
Level - CORE
OPTION

proj. no.: 2018013

en:\administrator\Desktop\Caroline\For Remodel\Work\Hollis Church\20200217 CORE - CongregationalChurch\Hollis-2018013_V23.dwg Wednesday, February 19, 2020